



[Alexander K. Koch](#)

Behavioral Economics, Experiments, Randomized Controlled Trials, Microeconomics

 [Alex Koch](#)

My research centers around incentives (for example, reputation), social preferences, motivation and self-regulation (with a focus on goal setting and mental accounting). I do theoretical research using both traditional microeconomic theory and the tools of behavioral economics, as well as empirical research with a focus on experiments (both lab and field).



[Alexandra Regina Kratschmer](#)

Text/discourse analysis, argumentation, language and rhetoric on social media, language evolution, language and cognition

 [@KratschmerR](#)

Having worked with text/discourse analysis, rhetoric and argumentation all my life, I have recently expanded this interest to the analysis of how people linguistically negotiate their social status/identity on social media. In an upcoming project, together with IMC colleagues Rebekah Baglini and Byurakn Ishkhanian, we will attempt to map the online discourse of the pro- and anti-vaccination debate in different parts of the world both qualitatively, quantitatively as well as experimentally.



[Andreas Højlund](#)

Neurolinguistics, Cognitive neuroscience, Parkinson's disease, DBS (deep brain stimulation), M/EEG

 [@ahoejlund](#)

Using MEG, I'm investigating linguistic and cognitive adverse effects of DBS (deep brain stimulation) as a treatment option for Parkinson's disease patients. Also involved as an M/EEG expert in many diverse projects related to language and music in the brain.

 [CFIN](#)



[Andreas Lieberoth](#)

Media psychology, Digital technology, Play and games, Social psychology, Education

 [@lieberothdk](#)

Educational psychologist studying on how digital technologies affect behaviour, thinking, learning, work and play at the Danish School of Education (DPU) and IMC. Teaching primarily in the educational psychology programme, but also lecturer in mixed methods research and behavioural sciences in other departments across AU.

 [Playtrack](#), [SEER](#)



Andreas Roepstorff

🐦 [@aroepstorff \(ENG\)](#) + [@androrff \(DK\)](#)



Anna Louise Skovgaard

Medical anthropology, ethnography, chronic illness, patient trajectories, care practices

I am a Ph.d.-student studying the negotiations of care and duties among chronically ill patients with frequent admissions to the hospital using ethnographic methods. I have a background in anthropology and am currently based at the Regional Hospital in Horsens.



Anne Line Dalsgård

Literature, emotion, temporality, intersubjectivity, ethnography

Line is an anthropologist with more than 20 years of research commitments in Brazil, where she has studied the predicaments and longings related to a life in poverty. Originally trained as an actress she has a keen interest in the bodily and emotional components of understanding. Presently, she participates in the Velux funded project “From participant to reader leader”, including a sub-project in Brazil.

🏠 [From participant to reader leader](#)



Anne Maj van der Velden

Mindfulness, recurrent depression, prevention, mechanisms of change, neuro-imaging

✉ am.vandervelden@clin.au.dk

PhD student Institute for Clinical Medicine studying mechanisms of change in mindfulness based cognitive therapy in the treatment of recurrent depression.

🏠 [Mindfulness and the Prevention of Depression](#)



[Anne-Mette Pedersen](#)

Administration, Research Support, Project administration, Financial Controlling, Communication

🐦 [@am_pedersen](#)

Administrative Point of Contact. Centre Administrator.



[Armin W. Geertz](#)

Cognitive theory in the study of religion; neurobiology of religion; evolutionary theories of religion; method and theory in comparative religions; and the religions of indigenous peoples.

✉ awg@cas.au.dk

Professor Emeritus in the History of Religions, Department for the Study of Religion, Aarhus University, co-founder of the Religion, Cognition and Culture Research Unit and of Interacting Minds Centre. He is senior editor of Journal for the Cognitive Science of Religion and Advances in the Cognitive Science of Religion series (both at Equinox).



Arnault-Quentin Vermillet

Social dynamics, scaling, conflicts, networks and computation

🐦 [@AVermillet](#)

Hoping to achieve World Peace with insight from ecological science to computational modelling, maybe one day. In the meanwhile, studying the influence of individuals' cognition and behaviour on the structural properties of their group.



[Byurakn Ishkhanyan](#)

Clinical linguistics, psycholinguistics, neurolinguistics, cognitive science

🐦 [@byureka](#)

As a trained psychiatrist and a clinical linguist, my main interest is how the healthy brain processes language, how language breaks down in various clinical conditions, such as aphasia or schizophrenia, and how language is related to other cognitive functions. I am currently working in the Puzzle of Danish project, investigating whether there are native language processing differences between Danish and Norwegian speakers.

🧩 [Puzzle of Danish](#)



Carsten Bergenholtz

Collective problem-solving, search, social learning, cognitive psychology, citizen science

🐦 [@justsomeoneDK](#)

I do research on individual and collective problem-solving. Computer-based experiments are carried out in the lab, as well as on the ScienceAtHome citizen science platform, allowing us to investigate how individuals solve real, high-dimensional yet well-defined problems. The end goal is to inform business research on how to organize problem-solving in organizations.

🏠 [CobeLab](#), [ScienceAtHome](#)



Catrin Servanda Kost

Chinese Archaeology; cultural exchange & receptivity; mobile-settled interaction; human-animal relations; personal hygiene

🐦 [@EarlyChinaRocks](#)

I am a trained archaeologist with a focus on late pre-imperial and early imperial China (ca. 5th cent. BCE-2nd cent. CE). Always interested in taking up impulses and theories from different fields within the humanities, my research is interdisciplinary and comparative in orientation and covers multifaceted themes such as cultural appropriation and exchange, human-animal interactions, early conceptions of personal hygiene and Eurasian steppe dynamics.



Charlotte Christiansen

Youth, mental illness, reading, literature, literary anthropology

✉ cec@cas.au.dk

I am working on a PhD project (2018-2021) focusing on how art experiences can be explored as a process of subjectivity formation. I explore this through ethnographic fieldwork conducted with young people with mental health problems who participate in different cultural activities in Denmark (photographing, writing, looking at paintings and primarily reading literature together).

🏠 [From participant to reader leader](#)



Charlotte Nørholm

Diabetes, health technology, chronic illness, digital health, self-tracking

🌐 [Charlotte Nørholm](#)

My research explores the psychosocial impact of new health technologies in diabetes care. Appropriating and incorporating new health technologies into our lives always produce new challenges, as they interact into our daily lives and display information about our actions and ourselves. In order to support and improve life for people with chronic illnesses, we need to explore their experiences, understand their needs, and continue to develop new solutions.



Christine Parsons

Psychological treatment, socio-emotional functioning, treatment adherence, wearable technology

🐦 [@ce_parsons](#)

I am a psychologist interested in mental health and treatment, with a particular focus on social and emotional functioning. My major current project examines how participants engage with their treatment homework, using wearable technology and smartphone monitoring to examine outcomes like sleep and physical activity.



Christopher Cox

Language acquisition, cognitive development, predictive processing, phonetics & phonology, statistical learning

🐦 [@4CCoxAU](#)

I am a PhD student investigating how infants discover and learn the sounds of their first language. My PhD project uses a new experimental methodology to investigate how infants' speech production helps them in categorising the speech sounds of their mother tongue. Other interests include articulatory and acoustic phonetics, predictive processing, statistical learning, and computational modelling.



Christoph Mathys

Computational neuroscience, predictive coding, data science, disorders of the mind, hierarchical gaussian filter

🐦 [@chmathys](#)

Research in Chris's group is focussed on the computational modelling of inference, learning, and action as they are implemented in the brain, with a particular focus on the role of neuromodulators. A key feature of this modelling is the reduction of Bayesian inference to updates driven by precision-weighted prediction errors, which has enabled the development of hierarchical models of message passing which are able to describe inferential failures giving rise to psychopathology.



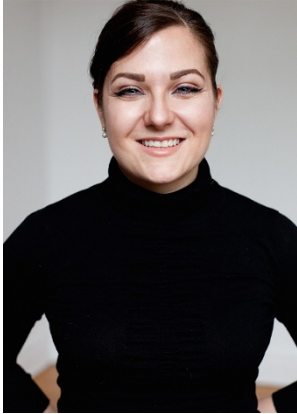
Cordula Vesper

Joint action, non-verbal communication, movement, social interaction, cognitive science, cognitive semiotics

🐦 [@cordulavesper](#)

My research focuses on the cognitive mechanisms underlying joint actions, i.e. actions performed by multiple people. This interest extends into areas such as engagement with art, ensemble music performance, nonverbal communication, human robot interaction, sense of agency and team sports. Recently, as part of the "Experimenting, Experiencing, Reflecting" project, I have started to explore how to bridge science and art, lab and public space, quantitative and qualitative methodology.

🏠 [Experimenting, Experiencing, Reflecting](#)



[Daina Crafa](#)

Culture, mental health, neural flexibility and plasticity, social interaction, social transmission

🐦 [@dcrafa](#) / www.dainacrafa.com

I am a neuroscientist who studies human variations across social and cultural contexts as well as the feedback loop between shaping and being shaped by these contexts. My work examines typical and pathological social processes - with a special emphasis on change during social interactions - using multidisciplinary experimental methods and integrative theories.

🏢 [CFIN](#)



[Dan Mønster](#)

Complex systems, Social interaction, experimental economics, collaboration, nonlinear time series analysis

🐦 [@dmonsterman](#)

I use behavioural experiments to study how social structure and interaction enable or constrain collaboration. My current research includes physiological aspects of social interaction, formation of hierarchies, nudging in complex environments and investigating under what conditions cooperation can overcome competition in a complex environment.

🏢 [CobeLab](#)



[Dorte Døjbak Håkonsson](#)

Organization science, collaborative structures, non-hierarchical organizing, design of informal organizations, the role of emotions in cooperation

✉ dod@mgmt.au.dk

In my research I focus on how organizations (defined as multi-agent, goal directed systems) work. In trying to improve understanding (and practice) of human collaborative efforts, the fundamental processes of interest pertain to the division of task and integration of effort. Here, my current main interest is on how informal interactions (within the formal hierarchy) obtain these.

🏢 [ICOA](#)



[Ella Paldam](#)

Co-creation, co-production, playfulness, interaction, communication

🐦 [@ellapaldam](#)

In my research, I explore how children enter into shared creative processes with other children and with adults across a range of different contexts (e.g. education, special education, user-led product development). I collaborate with both private and public sector organizations and schools, and my projects are funded by Carlsberg Foundation, Innovation Fund Denmark, TrygFonden, and Lego Foundation.

🏢 [Playtrack](#), [CollaboLearn](#)



[Ethan Weed](#)

Speech, Language and Communication Disorders.

🐦 [@ethanweed](#)

My current research projects include language development in children with autism spectrum disorder (ASD), voice and prosody in people with ASD, measures of reading comprehension, and dyslexia.

🏠 [Center for Language as a Tool for Learning](#)



[Hanna Thaler](#)

Autism, emotion, mental health, social perception, psychiatry

🐦 [@hanna_thaler](#)

I am a researcher and clinician who studies emotion perception and mental health in autism. More broadly, I am interested in understanding how people with different neurodevelopmental and psychiatric conditions use emotions to connect with others. My current work includes evaluating a new group intervention for autistic adults and using psychophysics and model-based fMRI to assess context integration in emotion perception.



[Hanne Bess Boelsbjerg](#)

Impaired consciousness, negotiating uncertainties, clinical decision-taking, micro-phenomenology, methodology of touch

🐦 [@HanneBess](#)

Working within cross-disciplinary health research for many years. Applying approaches from medical anthropological, micro-phenomenology, narratives in medicine with existential and embodied explorations.

🏠 [Borderlands of Living](#)



[Helene Nymann](#)

New Narratives, Remembering, Experimenting, Experiencing, Reflecting,

🐦 [@Imatwitt](#)

I am a visual artist and PhD fellow focusing on human and non-human memory-systems for image-making. Looking at the fundamental aspects by which we process information, store knowledge and collectively remember in the digital age, my intention is to create new narratives and movements for more sustainable futures.

🏠 [Experimenting, Experiencing, Reflecting](#)



Ida Selbing

Social cognition, learning, decision-making, computational modeling, human-robot interaction

🐦 [@ISelbing](#)

I combine experimental methods with computational models to understand learning and decision making in social contexts. Currently, I am part of a project in social robotics where I try to apply knowledge of social cognition on human-robot interaction.

🏢 [INSOR \(Integrative Social Robotics\)](#)



Johanna Seibt

Analytical process ontology, social robotics, social ontology, social cognition, metaphysics

Johanna Seibt's research is aimed at the development of "General Process Theory", a systematic framework for the description of (natural, mental, or social) processes. Since 2012 she has worked in the area of 'robophilosophy', and engages in interdisciplinary research in social robotics; currently she is PI of a research team of 26 researchers from 11 disciplines, where new applications of social robotics are developed using the method "Integrative Social Robotics" (www.integrativerobotics.org).

🏢 [INSOR \(Integrative Social Robotics\)](#)



Joshua Skewes

Cognitive Science, Cognitive Modeling, Decision making, perception, social cognition

🐦 [@JCSkewesDK](#)

Joshua Skewes is Head of Department at Linguistics, Cognitive Science, and Semiotics, and Co-Director of the Interacting Minds Centre. His research is on cognitive modeling and social cognition, and he is interested in real world applications of cognitive science.

🏢 [INSOR \(Integrative Social Robotics\)](#)



Julia Nafziger

Behavioral Economics, Experimental Economics, Applied Micro Theory

My current research focusses on self control problems and ways to overcome them, as well as the design of nudges when individuals pay limited attention.



Karsten Olsen

Social cognition, metacognition, social learning, individual differences, cumulative cultural evolution,

🐦 [@karsolsen](#)

My work centers around social interaction and the cognitive mechanisms that are underlying our unique social and cultural capacities, and I am interested in interaction from the level of two-person (dyadic) groups and all the way up to collective intelligence in large crowds. Our work uses a combination of psychophysics, behavioral measures, and neuroimaging along with interactive experimental paradigms and computational modelling.



Katrin Heimann

Experience, aesthetic experience, playfulness, behavioral change, societal change, sustainable change, micro-phenomenology, research as intervention

I am trained in philosophy and cognitive neuroscience and currently focussing on qualitative methods (micro-phenomenology in particular, and its combination with other (also quantitative) methods) to explore how art and research can contribute to sustainable societal change.

🎧 [Playtrack](#)



Kenneth C. Enevoldsen

Humanities computing, Cognitive Science, Statistical and Computational Modelling, Natural language processing

🐦 [@KCEnevoldsen](#)

As a student developer at Center for Humanities Computing Aarhus, I work primarily with researchers in the humanities, psychiatry and anthropology. My previous work includes work in natural language processing, statistical analysis and web indexation. I just finished a project with Iben Have where we used image recognition of spectrograms to classify the content of Danish radio programs. Currently working on multiple project with Aarhus Psychiatric Hospital as well as a project on the anonymization of the Danish Web Archive using HPC. This project is in collaboration with the Royal Danish Library.

🎧 [CHCAA](#)



Konstantinos Koumaditis

Human-computer Interaction, Information Management and Immersive Technologies (VR/AR/MR)

I am keen to understand the interplay between Information Technology (IT) and humans and explore the many opportunities and challenges we face in our professional settings to interact in a harmonious and beneficial way. From my background in Information Systems (IS), management and healthcare to a new passion of Immersive Technologies, my research tries to tackle real-life challenges and create frameworks for a wider audience of stakeholders.



[Kristian Tylén](#)

Cognitive science, language, social interaction, problem solving, cultural evolution

🐦 [@kristian_tylen](#)

My research addresses the intersection between social interaction, human communication and problem solving, which I study using experimental methods. Furthermore, I am becoming increasingly interested in cultural evolution and creativity.

🧩 [Puzzle of Danish](#)



[Kristoffer L. Nielbo](#)

Humanities computing, culture analytics, cultural transmission, change detection, dynamical systems

🐦 [@nielbo23](#)

As a humanities researcher I have specialized in applications of computational tools and techniques for analysis, interpretation and storage of cultural data. I have participated in a range of collaborative and interdisciplinary research projects involving researchers from the humanities, social sciences, health science, and natural sciences. My research covers two areas of interest of which one is more recent (automated text analysis) and the other (modeling of cultural behavior) has followed me during my entire academic career. Both interests explore the cultural information space in new and innovative ways by combining cultural data and humanities theories with statistics, computer algorithms, and visualization.

🧩 [CHCAA](#)



[Lars A. Bach](#)

Evolution of cooperation, Social investment, Experimental Game Theory, Population Biology, Sociality and Animal Behavior (including homo Sapiens :)

🐦 [@LarsABach](#)

I work with cooperation in groups in rudimentary forms with simple interaction scenarios. The research includes both (agent-based) modelling and experiments with socio-economic games. Both in Socio-Economics and in Evolutionary Ecology the maximizations of utility and fitness respectively have been challenged by observations of seemingly self-sacrificing behaviours. I am interested in disclosing basic mechanisms and interaction structures that promote and sustain complex (pro)social system. These questions emerge in distant disciplines from population genetics and behavioural economy to sociology and organizational sciences.

🧩 [ICOA](#)



Lasse Hansen

Cognitive Science, Statistical and computational modelling, Natural Language Processing, Depression

✉ lasseh0310@gmail.com

I'm a master's student at cognitive science with an interest in predictive modeling of psychiatric conditions. I currently work as a student programmer at CHCAA where I assist researchers in applying natural language processing techniques to their projects.

🏢 [CHCAA](#)



Lea Skewes

Gender stereotypes, gender bias, gender discrimination and LGBTQIA discrimination

🐦 [@GiR_AU](#)

I am social psychologist who works with sex/gender, discrimination, and gender equality as well as LGBTQIA discrimination. I am also the founder and coordinator of Gendering in Research at AU.

🏢 [Gender in Research \(GiR\)](#)



Lene Aarøe

Political psychology, political communication, experiments

🐦 [@aaroe_lene](#)

I study public opinion, effects of political communication, and transmission of political information drawing on insights from social psychology, evolutionary psychology, political science, communication, and biology. Currently I am involved in several projects studying which types of political information that people share in their social networks including on social media. Methodologically I work mostly with survey and laboratory experiments.



Lise Marie Andersen

Philosophy of Science and Medicine, Evidence, Causality, Consciousness

🐦 [@LiseMarieA](#)

Philosopher of science and mind, currently working on the project Borderlands of Living exploring and tracing uncertainties in developing prognostic tools using neuro-imaging and -recordings for patients with uncertain consciousness.

🏢 [Borderlands of Living](#)



[Lucia Angelino](#)

Phenomenology, Aesthetics, collective intentionality, collective free improvisation, social interaction, we-consciousness

✉ lucia.angelino@aias.au.dk

Lucia Angelino is a research fellow at AIAS and a postdoctoral researcher in philosophy with advanced competency in phenomenology, aesthetics and contemporary continental philosophy. Combining theoretical work with the analysis of a few study-cases her project at AIAS aims at exploring a novel approach to the much-debated issue of collective intentionality beyond current thinking in analytic philosophy.

🏠 [AIAS](#)



[Marc Malmendorf Andersen](#)

Play, Cognitive Science, Predictive Processing, Perception, Cognitive Science of Religion

🐦 [@marcnicklas](https://twitter.com/marcnicklas)

My research focus is on the cognitive and physiological underpinnings of play in humans, and the development of methodologies to study play in experimental and 'ecological' field situations. ■

🏠 [Playtrack](#), [SEER](#)



[Marlene Skovgaard Lyby](#)

Systems theory, psychological adaptation, emotional development, mindfulness, and cognitive functioning

✉ mlyby@psy.au.dk

I am a psychologist with a very broad profile. I have a background in molecular biology and is therefore very interested in the interactions between body and mind (in therapy, mindfulness, well-being, education, etc.)



[Martijn van Beek](#)

Anthropology, contemplative life, meditation and mindfulness, microphenomenology

✉ mvanbeek@cas.au.dk

My IMC related research interests concern the anthropology of contemplative life, meditation and mindfulness, and their refraction and reformulation through modern cognitive scientific and pharmacological research. I also explore microphenomenology as a tool for research on and as contemplative practice.



[Martin Høybye](#)

Human-water relationships, arts-based research, collaborative practices, environmental education, sustainable heritage management

🐦 [@martinhoybye](#)

Pursuing a PhD within the Environmental Humanities with a focus on water I explore human-water relationships in places influenced by water scarcity and environmental stress with a particular focus on Cape Town, South Africa, and the 'Day Zero' crisis. I have worked in communications, in education and as an artist for a number of years and am developing collaborative song creation as a method in ethnographic fieldwork. I am interested in 'knowing as a verb', the deliteralization of knowledge, looking at new ways of disseminating knowledge and communicating the challenges of climate change.

🏠 [HATA Project](#)



[Mathias Clasen](#)

Literature, media, evolution, horror, recreational fear

🐦 [@mathiasclasen](#)

I'm a literature and media researcher with a special interest in evolutionary or biocultural theory. Most of my research focuses on scary entertainment, from horror novels to haunted houses, and I'm involved in empirical research projects on the curious phenomenon of "recreational fear."



[Melanie G. Rosen](#)

Mind, dreams, agentic experience, the self, consciousness

🐦 [@MelGRosen](#)

Carlsberg distinguished postdoctoral fellow researching how the sense of agency changes between sleep and wake and what this tells us about human experience. My general project is to use the altered states of consciousness in dreaming to understand consciousness in general.



[Mette Løvschal](#)

Landscape archaeology, spatial perception, time, collective land governance, commons

My research engages with a range of archaeological, social anthropological and philosophical debates pertaining to spatial ontologies and trajectories, land tenure changes, issues related to time and temporality, spatial perception, and tensions between conceptualization and materiality. I have investigated the spread of land tenure boundaries from some of the earliest confiscations of pastureland in Bronze Age Scandinavia to current fencing problems in East Africa, as well as long-term patterns in Iron Age sacrificial traditions in Northern Europe and alternative chronological models of long-term cultural change.



[Mette Terp Høybye](#)

Medical anthropology, clinical interaction, health technology, decision making, uncertainties of consciousness, sensory ethnography

🐦 [@mettehoeybye](#) + [@borderlands_liv](#)

Tracing the uncertainties of prognostics in the treatment of patients with severe brain injury, exploring the intersection of scientific and clinical reasoning on ambiguous signs of consciousness, together with my interdisciplinary team. Keenly engaging and experimenting with new methods in anthropological health research.

🏠 [Borderlands of Living](#)



[Mette Steenberg](#)

Literary Reading, engagement, didactics, phenomenology, mental health

🐦 [@MetteSteenberg](#)

I work on the relationship between literary reading engagement and mental health effects. Most of my work take place in specific contexts; schools, mental health, criminal justice, community settings using primarily phenomenological methods in my explorations of reading engagement; when and how in response to what.

🏠 [From participant to reader leader](#)



[Micah Allen](#)

Embodiment, Interoception, Metacognition, Psychiatry, Consciousness

🐦 [@micahgallen](#) + [@visceral_mind](#)

My research applies computational models, pharmacology, and psychophysics to understand brain-body interaction and its disruption in psychiatric and health-harming illnesses. I am also generally interested in developing model-based approaches to subjective experience ('computational neurophenomenology'), including for example metacognition, mind-wandering, interoception, and social cognition.

🏠 [ECG](#), [CFIN](#), [AIAS](#)



[Michael Bang Petersen](#)

Evolutionary psychology, political attitudes, social media, misinformation, aggression

🐦 [@M_B_Petersen](#)

I study how evolved psychological adaptations for small-scale social interaction structures the way modern citizens think and feel about politics. I am particularly interested in the darker sides of human nature such as prejudice and violence and a current focus is how such processes unfold on social media.



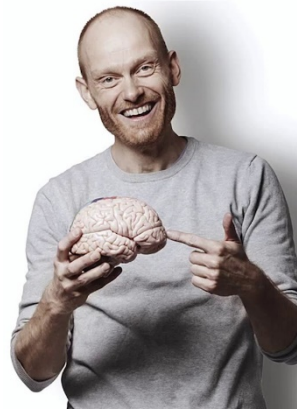
[Mihaela Taranu](#)

Play, Curiosity, Creativity, life-span, eye-tracking

🐦 [@mihaela_taranu](#)

Mihaela works with Marc Malmndorf Andersen on a research project about play, predictions, and fun with the use of mobile eye-tracking.

🏠 [Playtrack](#), [Cognovo](#)



[Mikkel Wallentin](#)

Brain, language comprehension, spatial language, semantics, sex differences

🐦 [@mikkelwallentin](#)

I study how language interfaces with perception and memory to construct meaning at both the neural and behavioural level. I am also interested in how cognitive processing varies or does not vary across individuals, e.g. due to sex and genetic differences and/or experience.

🏠 [CFIN](#)



[Morten Deleuran Terkildsen / 譚可深](#)

Medical anthropology, Public Health, Genetic counseling, Human (and non-human) interactions, clinical practices, Science & Technology Studies, China and Denmark

🐦 [@monxen](#)

I'm an anthropologist and my current work is concentrated on comparative studies of genetic counseling and perceptions of risk and uncertainty between countries. My interests however also concern the general field of public health. Here my focus is on the use of technology in health care and the ways these influence everyday clinical practices, professional-patient relations and the lives that may be lived outside the clinical world. Regionally I conduct studies in the Danish and Chinese health care systems. Theoretically I have a profound interest in issues of being, and the relational practices that make "things" come to be. I'm currently employed in DEFACTUM - Central Denmark Region.



[Morten H. Christiansen](#)

Evolution, Acquisition and Processing of Language; Chunking, Learning and Memory; Statistical Learning; Computational Models of Language; Social and Cultural Foundations of Language

🐦 [@MH_Christiansen](#) + [@PuzzleOfDanish](#)

I'm a cognitive scientist interested in how language works across multiple timescales, from milliseconds to millennia. I employ a variety of methodologies, including computational modeling, corpus analyses, statistical learning, psycholinguistic experiments, and neuroimaging. At AU, I lead the DFF-funded [Puzzle of Danish project](#) looking at phonological, sentential and discourse processing in Danish and Norwegian.

🏠 [Puzzle of Danish](#)



[Nicolai Ladegaard](#)

Depression, Cognition, eHealth, Culture & Health, Sleep

🐦 [@nizoxx](#)

Psychologist working in psychiatry. Focus on patients with affective disorders. Specific research interest in sleep disturbances and social- and non-social cognition in patient groups. Developing eHealth and cultural-based treatment solutions.

🏠 [From participant to reader leader](#)



[Niels Nørkjær Johannsen](#)

Cognitive archaeology, the Neolithic, technology, analogy, conceptualization

✉ nnj@cas.au.dk

I specialize in the Neolithic of western Eurasia and in cognitive aspects of modern human evolution and history. I am particularly interested in the unintended consequences of technologies in cognition and thought patterns.



[Oana Vuculescu](#)

Collective problem solving, social learning, search, fitness landscapes, innovation, directed global search

✉ ooanav@mgmt.au.dk

I conduct interdisciplinary research, bridging cognitive science and strategic management to better understand how individuals, either alone or in groups, deal with highly complex innovation problems.



[Panagiotis Mitkidis](#)

Behavioral Economics, Decision Making, Moral Psychology, Trust, Social Psychology

🐦 [@PanosMitkidis](#)

Dr. Panos (Panagiotis) Mitkidis is Associate Professor of Behavioral Economics and Decision Making at the Department of Management at Aarhus University, Denmark and at the Center for Advanced Hindsight at Duke University, USA. Panos' research spans a wide range of disciplines, from Moral and Organisational Psychology to Anthropology, with special interests on donation strategies, motivating healthy behavior, business ethics, and the psychophysiological underpinnings of cooperation and morality.



Rebekah Baglini

Semantics and pragmatics, philosophy of language, causal inference, computational linguistics

🐦 [@rebekahbaglini](#)

I combine theoretical and computational linguistics to investigate meaning in natural language. My current research at the IMC is focused on two areas: understanding the mechanisms underlying sound symbolism, non-arbitrariness, and expressive language; and modeling the reasoning and inference patterns that underlie linguistic descriptions of causality.



Richard Dewhurst

Eye Tracking, Cognition, Perception, Neuropsychology, Learning

Richard has applied eye tracking methodology to various research themes, from training eye movements, through to visual memory representations in the brain. Presently Richard works within the PlayTrack project for the LEGO Foundation, investigating eye movement components of creativity with an open-ended building task.

🧩 [Playtrack](#)



Riccardo Fusaroli

Social interactions, social cognition, Statistical and computational modeling, Language, Neuropsychiatric conditions

🐦 [@fusaroli](#)

I investigate interpersonal coordination, a focus is on coordinative efficacy (how do we effectively coordinate and think together?) and social impairment (what can go wrong? How do we compensate for that?), especially in autism spectrum disorder and schizophrenia. I am excited about combining computational methods (machine learning, network and agent based modeling, Bayesian cognitive modeling) to experimental and observational research.

🧩 [Puzzle of Danish](#)



Rikke Steensgaard

Autism, Cooperation, Cocreation, Social learning environment, Playful learning

Using my background as a clinical psychologist I am now facilitating and exploring new ways of creating social learning environments in cocreation with autistic children and their network.

🧩 [Playtrack](#), [CollaboLearn](#)



[Ross Deans Kristensen-McLachlan](#)

Cognitive linguistics; discourse processing; stylistics and rhetoric; lexical semantics; artificial intelligence

🐦 [@ross_dkm](#)

I am a Research Software Engineer based at the Centre for Humanities Computing. I have a PhD in English Language and Linguistics but I now work more broadly, creating software which helps humanities researchers to work with their data. This means combining detailed, domain-specific knowledge from the humanities with state-of-the-art, computational methods derived from natural language processing and computational linguistics. I am particularly interested in the linguistic analysis of historical and literary texts, for which contemporary language models are often inadequate. I am also focused on natural language understanding which functions at a more human-scale, as opposed to current, data-intensive frameworks.



[Savannah Schulz](#)

Reflection, Learning, Cognitive Science, Educational Research, Documentation

🐦 [@iamconscious2](#)

In my research, I am investigating the role of the reflection process in formal learning environments. My experimental work utilises participatory research methods to better understand how reflection is understood and practiced in classrooms. In this, I am attempting to link pedagogical practice with cognitive research.

🖨️ [Playtrack](#), [SEER](#)



[Simon Tobias Karg](#)

Moral Psychology, Leadership, Character Evaluations, Cooperation, Behavioral Economics

🐦 [@simanfication](#)

My research falls into the broader realm of moral psychology, i.e. moral behavior and judgments in day-to-day life. I'm especially interested in how authority figures (e.g. leaders) shape the dynamics of ethical decision making in groups, and how we judge and update our impressions of other people's moral character.

🖨️ [ICOA](#)



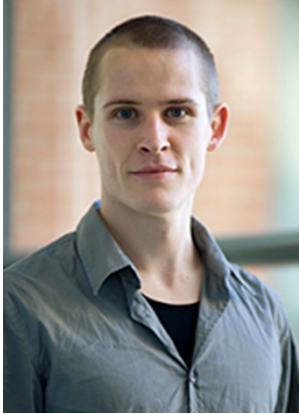
[Stine Strøm Lundsgård](#)

Social interaction, collaboration, social problem-solving, learning, play

✉️ stinestroem@cas.au.dk

I have a master's degree in educational psychology and am interested in the cognitive and social processes in human interaction and problem-solving and how these can be measured in a meaningful and reliable way. I am currently working on creating a learning environment for autistic children, which supports their development of collaborative skills.

🖨️ [Playtrack](#), [CollaboLearn](#)



[Uffe Schjødt](#)

Religious Experience, Prayer Psychology, Neuroscience of Religion, Charismatic Interaction, Experimental Approaches to Religion

✉ [social link \(twitter, email, or linkedin etc\)](#)

Uffe Schjødt uses experimental methods to explore the psychological, biological, and behavioral processes involved in religious thought and behavior.



[Vibeke Fuglsang Bliksted](#)

Social cognition, neurocognition, schizophrenia, fMRI, patient subgroups

✉ vibeke.bliksted@clin.au.dk

I do research on social cognitive deficits in first-episode schizophrenia. I am interested in how to differentiate social cognitive deficits in schizophrenia from autism spectrum disorders; the cultural impact on social cognition; brain mechanisms involved in social cognition and finding clinical useful measures of social cognition.